

Cọc tiếp địa Ramratna phi 14 hoặc 16 mm dài 2.4 mét

Copper Bonded Earth Rods

- Produced by electrolytically bonding steel-core with 99.95 % pure copper
- Most economical method of achieving a low earth-resistance
- Threading formed by cold rolling process (stronger than cut-threads), ensuring strength of the metallurgical bond
- Low carbon-steel-core ensures high tensile strength
- Highly corrosion resistant, ideal for deep driving
- Standard copper thickness is 0.25 mm
- Custom copper thicknesses also available

Threaded

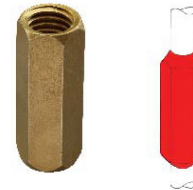
Nominal Size	L mm	Thread Size	Shank D mm	L1 mm	Unit Weight Kg	Pack Quantity	Part Number
1/2"	1200	9/16"	12.7	25	1.18	25	RRER 1212
	1500				1.55	20	RRER 1215
	1800				1.76	20	RRER 1218
	2400				2.36	15	RRER 1224
5/8"	1200	5/8"	14.2	25	1.49	20	RRER 1412T
	1500				1.86	15	RRER 1415T
	1800				2.98	15	RRER 1418T
	2400				2.23	10	RRER 1424T
	3000				3.72	10	RRER 1430T
	1200				16mm	14.0	25
	1500	2.36	15	RRER 1615			
	1800	2.84	10	RRER 1618			
	2400	3.78	10	RRER 1624			
	3000	4.73	8	RRER 1630			
	1200	16mm	14.0	25			
	1500				1.81	15	RRER 1415
1800	2.17				15	RRER 1418	
2400	2.90				10	RRER 1424	
3000	4.00				8	RRER 1430	
3/4"	1200				3/4"	17.2	30
	1500	2.73	15	RRER 1715			
	1800	3.27	10	RRER 1718			
	2400	4.35	5	RRER 1724			
	3000	5.44	5	RRER 1730			

Material: Pure copper molecularly bonded onto a steel core

Unthreaded

Nominal Size	L mm	Shank D mm	Unit Weight Kg	Pack Quantity	Part Number
3/8"	1200	9.5	0.62	5	RRERB 3812

Material: Pure copper molecularly bonded onto a steel core

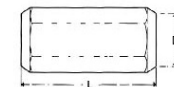


Threaded Couplings

- High-strength couplings, used for joining copperbond threaded earth rods together
- Manufactured from a high copper content alloy, ensuring excellent corrosion resistance
- Protect threads during installation
- Ensure continual contact between the rods, during and after installation
- Facilitate deep driving
- Lead-in for ease of assembly
- Available in hexagonal and round designs

Type Thread	L mm	D mm	Unit Weight Kg	Pack Quantity	Part Number
1/2"	50	15.5	0.035	25	RRCLPLR 1250
1/2"	60	15.5	0.043		RRCLPLR 1260
1/2"	70	15.5	0.049		RRCLPLR 1270
5/8"	50	18.5	0.041		RRCLPLR 5850
5/8"	60	18.5	0.048		RRCLPLR 5860
5/8"	70	18.5	0.056		RRCLPLR 5870
16 MM	50	18.5	0.041		RRCLPLR 1650
16 MM	60	18.5	0.048		RRCLPLR 1660
16 MM	70	18.5	0.056		RRCLPLR 1670
3/4"	50	23.0	0.057		RRCLPLR 3450
3/4"	60	23.0	0.082		RRCLPLR 3460
3/4"	70	23.0	0.098		RRCLPLR 3470

Material: Brass / Gunmetal



Threaded Driving Heads

- Screw into threaded couplings to allow deep driving of the earth rods
- Suitable for driving copperbond threaded earth rods by hand or with a power hammer
- Re-usable

Type	L mm	D mm	Unit Weight Kg	Pack Quantity	Part Number
1/2"	50	20	0.05	25	RRDH 1/2
5/8"	55	22	0.08		RRDH 5/8
3/4"	60	25	0.13		RRDH 3/4

Material: Steel

